

MINIMUM SHOULDER TAPER LENGTH = L/3 (feet)										
SHOULDER WIDTH (feet)	Posted Speed (mph)									
	25	30	35	40	45	50	55	60	65	70
8'	-	-	-	-	120	130	150	160	170	190
10'	-	-	-	-	150	170	190	200	220	240

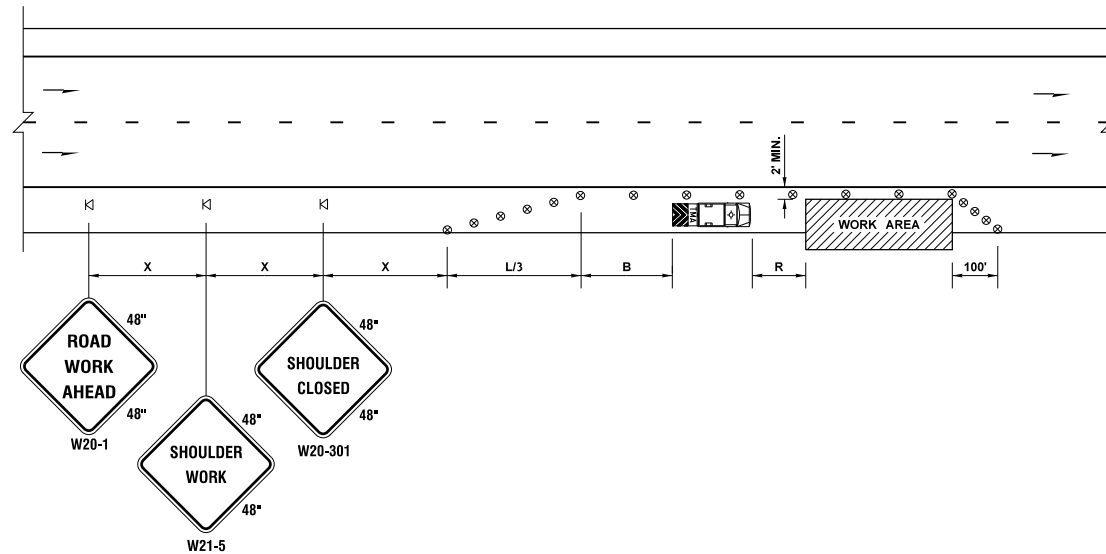
USE A MINIMUM 3 DEVICES TAPER FOR SHOULDER LESS THEN 8'.

SIGN SPACING = X (1)		
FREEWAYS & EXPRESSWAYS	55 / 70 MPH	1500' ±
RURAL HIGHWAYS	60 / 65 MPH	800' ±
RURAL ROADS	45 / 55 MPH	500' ±

(1) ALL SPACING MAY BE ADJUSTED TO ACCOMMODATE INTERCHANGE RAMP, AT-GRADE INTERSECTIONS AND DRIVEWAYS.

CHANNELIZATION DEVICE SPACING (feet)		
MPH	TAPER	TANGENT
50/70	40	80
35/45	30	60

BUFFER DATA											
LONGITUDINAL BUFFER SPACE = B											
SPEED (MPH)	25	30	35	40	45	50	55	60	65	70	
LENGTH (feet)	155	200	250	305	360	425	495	570	645	730	
TRANSPORTABLE ATTENUATOR ROLL AHEAD DISTANCE = R											
HOST VEHICLE WEIGHT 9,900 TO 22,000 lbs.						HOST VEHICLE WEIGHT > 22,000 lbs.					
< 45 MPH	45-55 MPH	> 55 MPH	< 45 MPH	45-55 MPH	> 55 MPH	< 45 MPH	45-55 MPH	> 55 MPH	< 45 MPH	45-55 MPH	> 55 MPH
100'	123'	172'	74'	100'	150'						



LEGEND

- ⌘ TEMPORARY SIGN LOCATION
- ⊗ TRAFFIC SAFETY DRUM
- TRANSPORTABLE ATTENUATOR

SHOULDER CLOSURE - HIGH SPEED

NOT TO SCALE

NOTES

1. NO ENCROACHMENT IN TRAVELED LANE. IF ENCROACHMENT IS NECESSARY, LANE SHALL BE CLOSED.
2. DEVICE SPACING FOR THE DOWNSTREAM TAPER SHALL BE 20' (FT) O.C.
3. ALL SIGNS ARE BLACK ON ORANGE.

FILE NAME	S:\Design R P& S\4-Standards\2-Plan Sheet Library\01-Published PSL\TC Work Zone Traffic Control\TC-6 Shoulder Closure - High Speed\TC-6.dgn										Plot 1
TIME	9:03:14 AM										PLAN REF NO
DATE	1/3/2018										TC6
PLOTTED BY	liddelf										SHEET
DESIGNED BY											OF
ENTERED BY											SHEETS
CHECKED BY											
PROJ. ENGR.											
REGIONAL ADM.											
	REVISION	DATE	BY	REGION NO.	STATE	FED.AID PROJ.NO.					
					WASH						
					JOB NUMBER	LOCATION NO.					
					CONTRACT NO.						
							DATE		DATE		
							P.E. STAMP BOX		P.E. STAMP BOX		
										TRAFFIC CONTROL PLAN	